



CENTENNIAL PARKLANDS NATURE PLAY

Pitfall traps

What animals will you find?

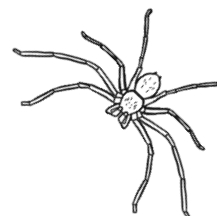
What you need:

A round container (cup, jar, or plastic bottle cut in half), shovel, magnifying glass, large container for transferring trapped animals to safely observe them, ID book or chart

Let's get started!

Setting your trap:

1. Find a space outdoors where you can dig near some good insect habitat
2. Use a small shovel to dig a hole to fit your container
3. Fill in the soil around the container. If there is leaf litter nearby, place it around the edges of your trap to camouflage it



Checking your trap:

- After several hours or the following morning, use a stick to clear the leaf litter from around your trap
- Check your trap at a distance looking for any biting or stinging animals
- Once safe, remove the trap and transfer your catch into a larger container
- Use field guides, apps, or online resources to identify the animals you have captured



Important!

- Check your trap early in the morning to avoid the creatures being held too long or getting too hot
- Remove your trap if you are no longer using it
- Check the weather forecast before starting this activity as rain can drown the insects
- Call WIRES or a snake catching professional if a snake is caught
- Check your pitfall trap every few hours



ALWAYS release
the animals into
the same place
when you are
finished
examining them!

